

LINSCAN 808 DIODE LASER

HAIR REMOVAL WITH SCANNING TECHNOLOGY



FAST. EFFECTIVE. VERSATILE.

SOPHISTICATED TECHNOLOGY



SMART. SMALL. STRONG.

OFFERING A NUMBER OF UNIQUE FEATURES

1 SMART SOFTWARE

Intuitive touch screen – similar to a smart phone

You can focus on clinical aspects (e.g. skin type and hair color) and the unit proposes the right technical parameters (e.g. fluence and pulse duration)

2 OPTIMIZED TREATMENT STRATEGIES FOR HAIR REMOVAL

Standard Hair Removal Mode: parameters that were proven over many years

MCT (Motion Control Technology) Mode: painless treatments

3 ONYCHOMYCOSIS

Safe and effective treatment settings for Onychomycosis

Faster, better results and less pain than Nd:YAG laser

4 SMALL COMPACT DESIGN

30 cm x 30 cm x 25 cm

Fully transportable

Optional cart

5 LARGE TREATMENT AREA

50 mm x 15 mm

Very fast treatments (e.g. 10 min for a back)

Homogeneous heating of the hair root layer

6 POWERFUL CONTACT COOLING

Sapphire block can be cooled down to 0°C

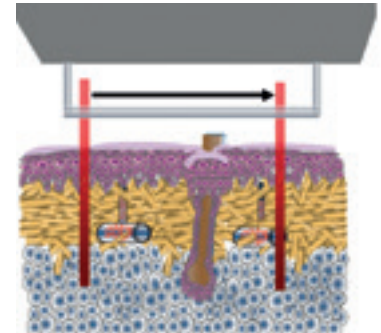
Safe and comfortable treatments for ALL skin types



LINEAR SCANNING: REVOLUTIONARY HAIR REMOVAL

THE CONCEPT OF LINEAR SCANNING

A laser beam is scanned over the entire treatment area of 50mm x 15mm. This process takes approximately 0.5 – 1.0s and is similar to the scanning of a photocopier.



ADVANTAGES OF LINEAR SCANNING

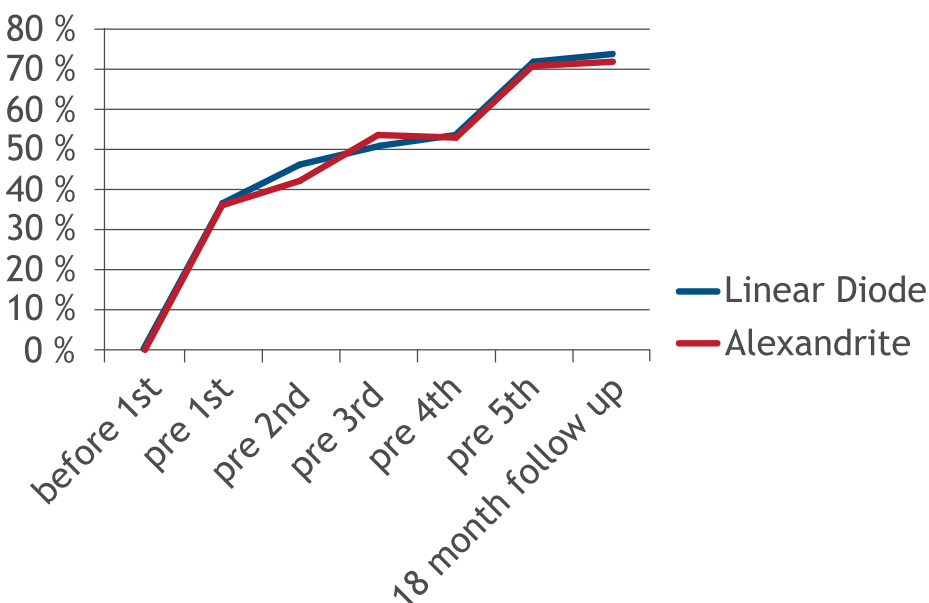
FAST: The large treatment area requires few positionings of the handpiece and allows very short treatment times (e.g. 10min for a back).

EFFECTIVE: The high power density in the actual laser beam allows high fluences in short pulses (e.g. 40 J/cm² in 20ms).

PROVEN TO BE EFFECTIVE

A clinical trial by Prof. Dr. Uwe Paasch from the University of Leipzig (Germany) proves that a linearly scanned diode is as effective as an Alexandrite laser: in the short and also in the long run.

HAIR REDUCTION



CLINICAL RESULTS

HAIR REMOVAL:

Before



after 7th
session



Before



after 6th
session



ONYCOMYCOSIS:

Before



after 10th
session

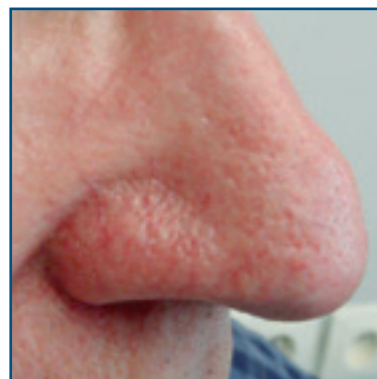


VASCULAR:

Before



after 1st
session



TECHNICAL INFORMATION

SPECIFICATIONS

Type of laser	Diode laser
Wavelength	808 nm
Max fluence	100 J/cm ²
Power density	2,000 W/cm ²
Treatment area	7.5 cm ² (50 mm x 15 mm)
Pulse duration	4 ms – 400 ms
Cooling	Contact
Dimensions (h x l x d)	25 cm x 30 cm x 30 cm
Weight	20 kg
Indications	Hair removal for all skin types Onychomycosis* Vascular lesions for light skin*

* Not FDA approved

PORTABLE. PROFITABLE. DURABLE.

Very low running costs

No consumables or disposables

Long diode life-time:
guaranteed 30 million pulses during warranty period

Per shot or per time business model possible



German Medical Engineering

Albert-Rupp-Strasse 2
91052 Erlangen
Germany

Phone: +49 9131 934 1590

Homepage: www.gmeonline.de
E-mail: info@gmeonline.de

